

封面

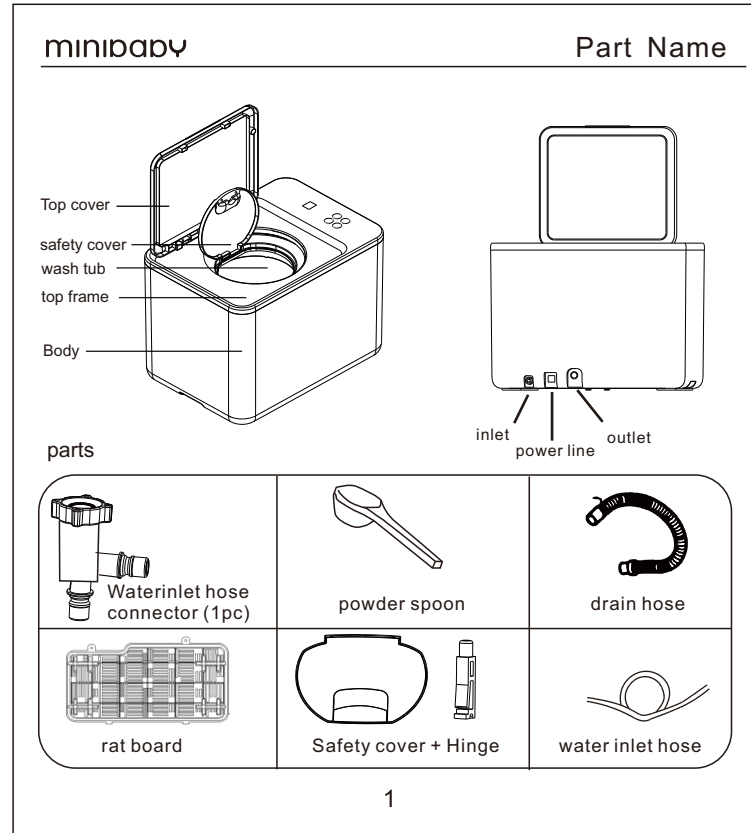
Before using your washing machine ,
please read this manual carefully and
keep it for future reference
Before using your washing machine ,
please remove the packing box and all
other protection foam

MINIS80

TOP LOADING FULLY AUTOMATIC
WASHING MACHINE
INSTRUCTION MANUAL

minibaby

正1

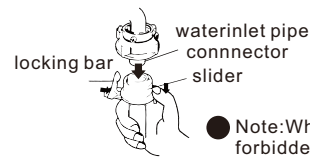


正2

MINIBABY

Installation of the washer

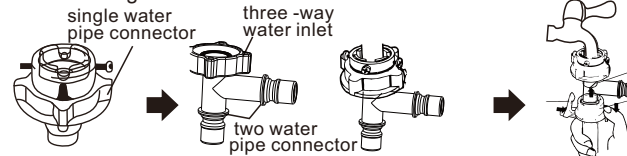
Installation of the water inlet hose (one washer)



Push down the slider , insert the waterinlet pipe into the joint and push it upward , Hang the locking bar on the inlet pipe joint, put down the slider and make the sound of "crack"

● Note:When using one washing machine, it is forbidden to use the following three-way water inlet and three-way water outlet

Two washing machines use one faucet



Loosen the single water pipe connector,insert the three-way water inlet and tighten .

Push down the slider , insert two water inlet pipes into the corresponding two water inlet pipe connectors

Water inlet pipe connect with the washing mahcine

Insert the water inlet pipe into the water inlet valve, to the end .

After inserting , gently pull the water pipe outward to ensure that the pipe is inserted in place.

Please use the new water inet pipe in the attachments, Old water inet pipe can not be reused



Insert the water inlet pipe into the water inlet valve, to the end

正3

minibaby

Installation of the washer

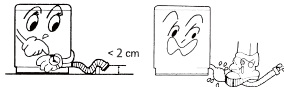
Installation of drain hose

Install the drain hose into the drain hose connector of the back of the washing machine, and then place the drain hose orifice into the down drain orifice.

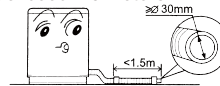
Drain hose should drain smoothly

The drain hose must be no higher than 2cm from the ground level . or it will cause abnormal draining

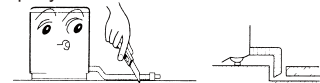
Please do not tread on or squeeze the drain hose



When the drain hose needs to be lengthened, the appropriate drain hose can be purchased separately. The length of the drain hose should not exceed 1.5 meters



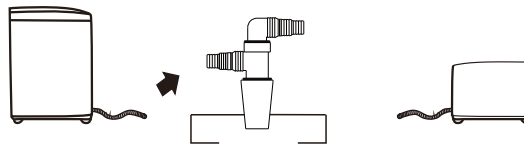
When the drain hose does not need to be too long, it can be removed from the middle part. In order to drain smoothly, the front section of the drain hose can be obliquely cut.



When the lengthened drain hose is too long, the drain hose can be removed from the proper position.



Installation of three-way outlet Connect the drain hoses of two washing machines to the drain hose joints respectively, and then insert the rubber three -way drain port into the floor drain.



反1

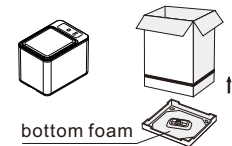
minibaby

Installation of the washer

In order to use the washing machine correctly and safely, please install and adjust the washing machine according to the instructions.

Remove the packaging

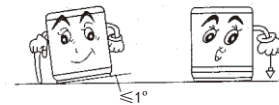
- Remove the pack box ,take out the bottom board of the cabinet
- Open the lid of washer , take out accessories
- Remove all other shipping material



Horizontal adjustment

The washing machine is more than 50mm away from the wall, and the maximum allowable inclination angle of the supporting surface is 1 degree. Inclination or unevenness of the ground will cause unstable operation or sudden stop during the washing machine working .Please use the following method to adjust

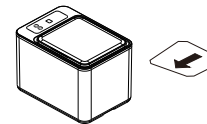
- Horizontal determination
Hang the suspension rope with a heavy hammer to confirm the horizontal of the washing machine



- Installation of waterproof board


Tilt the washing machine forward and insert the bottom plate into the socket of the base.





Install the rat proof board on the base of washing machine with cross screwdriver(two screws in the attachment)



反2

minibaby
Instructions



socks program Selection of Water Temperature at 60 and 90 Degrees Suitable for washing socks, 90 degree water temperature boiling washing to kill germs	Socks	Normal	Normal Program 40 degree warm water washing Suitable for washing small pieces of clothing with conventional materials
underpants program Selection of Water Temperature at 60 and 90 Degrees Suitable for washing underpants, 90 degree water temperature boiling washing to kill germs	Underpants	Speedy	Speedy program Normal temperature washing Suitable for washing slight dirt, sweat stains, etc.
self-cleaning program 90 degree high water temperature washing Cleaning and killing bacteria in tub	Self-cleaning	Underwear	Underwear Program Water Temperature Selection at 35 and 60 Degrees Suitable for washing underwear, bras, etc
Temperature Selection Button Use this button to select different temperatures in the program	 temperature control	 Program	Spin Program Suitable for spinning
Start Pause button Switch on the power and start running the washing machine Press this button to pause while running and press it again to continue running	 Start Pause button	 Power	Power When the power supply is on, it will automatically return to the power supply disconnection after 10 minutes.

5

反3

minibaby

Instructions

Program



Touch the program button, select the required program in turn, light up the selected program, and display the washing temperature by the digital tube when selecting the program. 5 seconds later show the remaining time of the program.

Temperature



Touch the temperature button to select the temperature of the current program. The digital tube shows the washing temperature and the remaining time after 5 seconds.

Bactericidal effect

Boiling wash clothes also have bactericidal effect. Boiling wash clothes can remove the odor of clothes and most bacteria causing skin allergies, and ensure that your clothes are always fresh and clean.

Bleaching effect

Because boiling washing clothes can even remove stubborn stains, the colour of clothes will be brighter.

Cleaning effect

Because the cleaning effect of the boiling washing program is more than 60% higher than that of the ordinary program, the cleaning effect of the boiling washing is still 20% higher even if only half of the detergent is added, so the boiling washing program is one of the best washing methods.

Troubleshooting

symptom	cause		relief
Enter water failure	Have not open the tap , stop water low water pressure , water have not reach the set water level after 20 minutes	E1	Open the tap . Clean the netting according to the method of "Cleaning the water inlet"
Drain failure	The drain hose is placed too high or have not lay down the drian hose . The drain hose is wrung or jammed .	E2	Check the drain hose , lay the drain hose lowly . Press "Start/Pause" button after checking . Open the machine cover and close the machine cover for alarm free
Open abnormal	Safety lid is open	E3	Closed the lid
Water level up on the highest safety water level		E5	PCB can Auto-precess
Sensor of water lever abnormal	Stage frequency less than high water level limit or exceed than low water level limit , will shows sensor of water lever error alarm	E6	Please ask professional person to check
Pause abnormal	Pause time exceed 10 minutes	E7	Please press the "Start" button
Temperature sensor abnormality	Short Circuit of Temperature Sensor	E8	Return to normal or switch to normal temperature water automatically
water temperature above the maximum water temperature set	Water temperature above 93 degrees	E0	To be cooled by water temperature or automatically switch to high temperature washing or shutdown
Abnormal heating tube	Continuous heating for 30 minutes, temperature rise less than 2 degrees	EC	Automatically switch to high water temperature program or shut down
Abnormal door lock	Continuous action, or can not be locked, can not be opened	F1	Restart
Abnormal communication	Poor contact between display panel and drive panel	CE	Ask professional maintenance personnel to check whether the wiring is loose or not.

Note: After checking the above points, there are still abnormalities. Please unplug the power plug and contact the distributor as soon as possible.

Automatic power-off function:

After 10 minutes of startup, the program does not start, the power supply is automatically cut off, the washing program is finished, and the power supply is automatically cut off by the washing machine.

Automatically alarm for 1 hour without handling, automatically cut off the power supply

minidaby

SPECIFICATIONS

MODEL NO	MINIS80		
Rated voltage / Frequency	110V~ · 60Hz		
Rated wash / spin capacity	0.8 kg		
Water level water volume (about)	5.0L		
Influent water pressure	0.03MPa~0.85MPa		
Rated input power	120W	Heating tube power	800W
net weight	约 15kg		
dimension	435*310*330mm		